



BLACKHAWK PASSENGER & LIGHT TRUCK TIRES 2025

BLACKHAWKTIREUSA.COM



BLACKHAWK

THE BLACKHAWK STORY

The iconic BLACKHAWK tire brand name originates from the strength, agility, speed and razor-sharp grip found in the powerful bird of prey itself. The full lineup of BLACKHAWK tire products are designed to symbolize the same adaptive attributes and confident characteristics as the fearless BLACKHAWK bird, in order to deliver inspiring performance for cars, trucks, crossovers and SUVs. Ruggedly tested to meet the highest of standards, the instinctive engineering behind our bold tread patterns and extensive use of complex rubber compounds allow drivers to command the road ahead and never look back. With BLACKHAWK tires, the road is your prey.

ABOUT BLACKHAWK TIRES

Our competitive BLACKHAWK brand believes in delivering great quality tires at fair prices with a wide range of car, truck, crossover and SUV products expertly engineered to match the performance of many major tire brands out there. Our products undergo vigorous testing to ensure they meet the demands of today's drivers, as our global team of tire engineers never settle for less. Our mission is to earn your trust as a valued customer, as all BLACKHAWK tires are manufactured in state of the art facilities under a high standard of excellence.

BLACKHAWKTIREUSA.COM

TABLE OF CONTENTS

4



HH11

ALL-SEASON TOURING

6



AGILITY UHP AS

ULTRA HIGH PERFORMANCE ALL SEASON

8



HU02

ULTRA-HIGH PERFORMANCE

10



AGILITY SUV

PERFORMANCE CUV/SUV ALL-SEASON

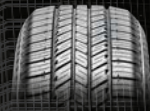
12



RIDGECRAWLER HT02

HWY TERRAIN ALL SEASON

14



HT01

PERFORMANCE HT/CUV/SUV

16



RIDGECRAWLER A/T

PREMIUM ALL-TERRAIN

18



RIDGECRAWLER R/T

RUGGED TERRAIN

20



ICE PREY BW10

STUDDABLE WINTER TIRE

22



RIDGECRAWLER LMD

LAST MILE DELIVERY

23



HST01

PREMIUM SPECIALTY TRAILER TIRE

BLACKHAWK

HH11 ALL-SEASON TOURING

The HH11 tire is an all-season touring tire engineered to deliver exceptional handling and all-season performance. The HH11 features 4 wide circumferential grooves to help channel water away quickly and efficiently delivering excellent wet weather traction. A modern non-directional tread design provides superior road feel and handling making the HH11 the perfect everyday tire.

FEATURES & BENEFITS

QUIET RIDE COMFORT

Modern non-directional all-season tread design. Variable pitch tread design for low noise performance.

ENHANCED GRIP

Silica compound for superior wet traction and reduced rolling resistance.

CONSISTENT DRIVING EXPERIENCE

Jointless Bead Cover: spiral steel band wrapped around beads improves the structural rigidity of the tire resulting in a smooth ride. Higher sidewall turn-up provides improved sidewall strength and durability.



HH11

ALL-SEASON TOURING



Part #	Size Dimension	LI/SR	L.R.	T.D. 32nds	UTQG
5546811K	175/70R13	82T		10	
5546809K	175/65R14	86T	XL	10	420 AA
5546810K	175/70R14	84T		10	420 AA
5546815K	185/60R14	82H		10	420 AA
5546794K	185/65R14	86H		10	420 AA
5546808K	185/70R14	88H		10	420 AA
5546802K	195/70R14	91T		10	420 AA
5546818K	185/55R15	82V		10	420 AA
5546803K	185/60R15	88H	XL	10	420 AA
5546787K	185/65R15	92H	XL	10	420 AA
5546817K	195/50R15	82V		10	420 AA
5546819K	195/55R15	85V		10	420 AA
5546783K	195/60R15	88H		10	420 AA
5546781K	195/65R15	91H		10	420 AA
5546813K	205/60R15	95H	XL	10	420 AA
5546785K	205/65R15	94H		10	420 AA
5546799K	205/70R15	96T		10	420 AA
5546814K	215/60R15	94H		10	420 AA
5546816K	215/65R15	96H		10	420 AA
5546790K	215/70R15	98T		10	420 AA
5546812K	205/50R16	87H		10	420 AB
5546779K	205/55R16	94V	XL	10	420 AA
5546779K	205/55R16	91H		10	420 AA
5546784K	205/60R16	92H		10	420 AA
5546786K	205/65R16	95H		10	420 AA
5546793K	215/55R16	97H	XL	10	420 AA
5546778K	215/60R16	95H		10	420 AA
4120167K	215/65R16	98T		10	420 AA
5546782K	225/60R16	98H		10	420 AA
5546801K	225/65R16	100H		10	420 AA
5546800K	205/50R17	89V		10	420 AA
5546820K	215/45R17	87W		10	420 AA
5546798K	215/50R17	91V		10	420 AA
5546789K	215/55R17	94V		10	420 AA
4120169K	215/60R17	96T		10	420 AA
5546796K	215/65R17	99T		10	420 AA
5546823K	225/45R17	91V		10	420 AA
5546805K	225/50R17	94V		10	420 AA
4120173K	225/55R17	97W		10	420 AA
4120173K	225/55R17	97V		10	420 AA
4120161K	225/60R17	99H		10	420 AA
4120170K	225/65R17	102H		10	420 AA
4120166K	235/60R17	102T		10	420 AA
5546821K	225/45R18	95W	XL	10	420 AA
5546822K	235/45R18	94 V		10	420 AB
4120150K	235/55R18	100V		10	420 AA
4120190K	235/60R18	103H		10	420 AA
4120563K	225/50R18	95V		10	420 AA

BLACKHAWK

AGILITY UHP AS

ULTRA HIGH PERFORMANCE ALL SEASON

The Agility UHP tire features advanced materials and innovative design, offering exceptional wear resistance, improved traction, stability, and noise reduction. Experience high-performance driving comfort and reliability, whether on the daily commute or enjoying road trips.

FEATURES & BENEFITS

CONSISTENT PERFORMANCE

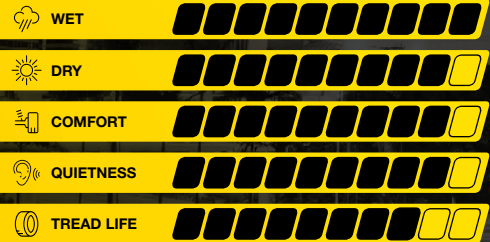
Advanced wear-resistant rubber compounds ensures consistent performance for the life of the tire.

SUPERIOR TRACTION AND CONTROL

Asymmetric design with outer shoulder blocks maximizing consistent cornering grip.

RIDE COMFORT

New casing construction enhances the damping performance in both sidewall and tread, effectively reducing road vibrations and road noise.



Part #	Size Dimension	LI/SR	L.R.	T.D. 32nds	UTQG
1600969K	205/45R16	87W	XL	10	600 A A
1600971K	205/50R16	87W		10	600 A A
1600973K	205/55R16	91W		10	600 A A
1600977K	215/55R16	97W	XL	10	600 A A
1600970K	205/45R17	88W	XL	10	600 A A
1600972K	205/50R17	93W	XL	10	600 A A
1600974K	215/45R17	91W	XL	10	600 A A
1600976K	215/50R17	91V		10	600 A A
1600978K	215/55R17	98W	XL	10	600 A A
1600981K	225/45R17	91V		10	600 A A
1600984K	225/50R17	98V	XL	10	600 A A
1600986K	225/55R17	101W	XL	10	600 A A
1600992K	235/45R17	97W	XL	10	600 A A
1600994K	235/50R17	100W	XL	10	600 A A
1600999K	235/55R17	103W	XL	10	600 A A
1601005K	245/40R17	95V	XL	10	600 A A
1601009K	245/45R17	99W	XL	10	600 A A
1600975K	215/45R18	93W	XL	10	600 A A
1600979K	225/40R18	92W	XL	10	600 A A
1600982K	225/45R18	95W	XL	10	600 A A
1600985K	225/50R18	99W	XL	10	600 A A
1600987K	225/55R18	102W	XL	10	600 A A
1600990K	235/40R18	95W	XL	10	600 A A
1600993K	235/45R18	98W	XL	10	600 A A
1600997K	235/50R18	97W		10	600 A A
1601000K	235/55R18	104W	XL	10	600 A A
1601006K	245/40R18	97W	XL	10	600 A A
1601010K	245/45R18	100W	XL	10	600 A A
1601015K	245/55R18	107W	XL	10	600 A A
1601016K	255/35R18	90W		10	600 A A
1600980K	225/40R19	93W	XL	10	600 A A
1600983K	225/45R19	92W		10	600 A A
1600988K	225/55R19	103W	XL	10	600 A A
1600989K	235/35R19	91W	XL	10	600 A A
1600991K	235/40R19	92W		10	600 A A
1600998K	235/50R19	103W	XL	10	600 A A
1601001K	235/55R19	105W	XL	10	600 A A
1601003K	245/35R19	93W	XL	10	600 A A
1601007K	245/40R19	98W	XL	10	600 A A
1601011K	245/45R19	102W	XL	10	600 A A
1601013K	245/50R19	101W		10	600 A A
1601017K	255/35R19	96W	XL	10	600 A A
1601018K	255/40R19	100W	XL	10	600 A A
1601020K	255/45R19	104W	XL	10	600 A A
1601023K	275/40R19	101W		10	600 A A
1601002K	235/55R20	102W		10	600 A A
1601004K	245/35R20	95W	XL	10	600 A A
1601008K	245/40R20	99Y	XL	10	600 A A
1601012K	245/45R20	103Y	XL	10	600 A A
1601014K	245/50R20	105W	XL	10	600 A A
1601019K	255/40R20	101Y	XL	10	600 A A
1601021K	255/45R20	105Y	XL	10	600 A A
1601022K	275/35R20	102Y	XL	10	600 A A
1601024K	275/40R20	106Y	XL	10	600 A A

AGILITY UHP AS

ULTRA HIGH PERFORMANCE
ALL SEASON



BLACKHAWK

HU02

ULTRA-HIGH PERFORMANCE

The HU02 is an ultra high performance radial tire engineered for high-performance sport coupes and sedans. The HU02 features a variable pitch tread design that provides a smooth, quiet ride while its advanced tread compound delivers superior cornering and exceptional handling.

FEATURES & BENEFITS

OPTIMIZED TREAD DESIGN

Asymmetrical tread pattern. Inside tread pattern is designed for water evacuation which enhances wet traction. Outside tread pattern is designed with larger contact areas which improves dry traction.

ADVANCED COMPOUND TECHNOLOGY

Silica compound reduces heat, provides improved wet traction, braking & reduced rolling resistance.

STRUCTURAL PERFORMANCE

Jointless Bead Cover: spiral steel band wrapped around beads improves the structural rigidity of the tire, increasing driver input.



Part #	Size Dimension	LI/SR	L.R.	T.D. 32nds	UTQG
5546244V	225/55R16	99W	XL	10	300 AA A
5546800V	205/50R17	93W	XL	10	300 AA A
5546267V	215/40R17	87W	XL	10	300 AA A
5546820V	215/45R17	91W	XL	10	300 AA A
5546789V	215/55R17	93W	-	10	300 AA A
5546823V	225/45R17	94W	XL	10	300 AA A
5546805V	225/50R17	98W	XL	10	300 AA A
4120173V	225/55R17	101W	XL	10	300 AA A
5546247V	235/45R17	97W	XL	10	300 AA A
5546251V	245/40R17	95W	XL	10	300 AA A
5546240V	225/40R18	92W	XL	10	300 AA A
5546246V	235/40R18	95W	XL	10	300 AA A
5546252V	245/40R18	97Y	XL	10	300 AA A
5546255V	245/45R18	100W	XL	10	300 AA A

HU02

ULTRA-HIGH PERFORMANCE



BLACKHAWK

BLACKHAWKTIREUSA.COM

BLACKHAWK

AGILITY SUV PERFORMANCE CUV/SUV ALL-SEASON

Blackhawk Agility SUV tires are designed for drivers who demand more from their SUVs. As the SUV market continues to grow, the Agility SUV is engineered to enhance the drivability of these larger, more rugged vehicles, with 50 current sizes ranging from 16" to 21" rim offerings. Featuring reliable traction and great handling, all while still offering a 60,000-mile tread life warranty, the Blackhawk Agility SUV tire helps you experience your SUV to its fullest—whether on your daily drive or creating new adventures. You can have confidence that not only will the Agility SUV take you where you're going, but it will do so in comfort. The Agility SUV welcomes your next adventure.

FEATURES & BENEFITS

WET PERFORMANCE

Wide circumferential grooves combined with shoulder lateral grooves allow water evacuation and provides excellent wet traction.

RIDE COMFORT

Proprietary rubber cushion layer reduces road noise and vibration, delivering a consistent enjoyable ride.

TREADWEAR PERFORMANCE

Through finite element analysis, wide tread surface uniform rigidity is achieved, this provides even ground pressure and promotes even wear.



Part #	Size Dimension	LI/SR	L.R.	T.D. 32nds	UTQG
4120167K	215/65R16	98H		10	700 A A
4120165K	215/70R16	100H		10	700 A A
1602492K	225/70R16	103T		10	700 A A
4120168K	235/60R16	100H		10	700 A A
4120193K	245/70R16	107T		10	700 A A
4120159K	255/70R16	111H		10	700 A A
4120158K	265/70R16	112H		10	700 A A
4120169K	215/60R17	96H		10	700 A A
4120173K	225/55R17	97V		10	700 A A
4120161K	225/60R17	99H		10	700 A A
4120170K	225/65R17	102H		10	700 A A
4120186K	235/55R17	99V		10	700 A A
4120166K	235/60R17	102H		10	700 A A
4120160K	235/65R17	104H		10	700 A A
4120192K	245/65R17	107H		10	700 A A
4120183K	255/60R17	106H		10	700 A A
4120163K	265/65R17	112H		10	700 A A
4120157K	215/55R18	95H		10	700 A A
4120152K	225/55R18	98V		10	700 A A
4120177K	225/60R18	100H		10	700 A A
4120172K	235/50R18	97V		10	700 A A
4120150K	235/55R18	100V		10	700 A A
4120190K	235/60R18	107V	XL	10	700 A A
4120147K	235/65R18	106H		10	700 A A
4120176K	245/60R18	105H		10	700 A A
4120185K	255/55R18	109V	XL	10	700 A A
4120151K	255/65R18	111T		10	700 A A
4120175K	265/60R18	110H		10	700 A A
4120178K	225/55R19	99V		10	700 A A
4120164K	235/45R19	95V		10	700 A A
4120153K	235/50R19	103V	XL	10	700 A A
4120191K	235/55R19	105V	XL	10	700 A A
4120187K	245/55R19	103V		10	700 A A
4120149K	255/50R19	107V	XL	10	700 A A
4120180K	255/55R19	111V	XL	10	700 A A
4120174K	255/60R19	109H		10	700 A A
4120148K	265/50R19	110V	XL	10	700 A A
4120188K	235/55R20	105V	XL	10	700 A A
4120194K	245/50R20	102V		10	700 A A
4120171K	245/60R20	107H		10	700 A A
4120146K	255/50R20	109V	XL	10	700 A A
4120182K	255/55R20	110V	XL	10	700 A A
4120179K	265/50R20	107H		10	700 A A
4120181K	275/40R20	106W	XL	10	700 A A
4120154K	265/40R21	105W	XL	10	700 A A
4120155K	275/40R21	107W	XL	10	700 A A
4120189K	275/45R21	110W	XL	10	700 A A
4120184K	285/40R21	109W	XL	10	700 A A
4120156K	295/35R21	107W	XL	10	700 A A
4120162K	315/40R21	115W	XL	10	700 A A

AGILITY SUV

PERFORMANCE CUV/SUV ALL-SEASON



BLACKHAWK

RIDGECRAWLER HT02

HWY TERRAIN ALL SEASON

The Blackhawk RIDGECRAWLER HT02 is an impressive highway terrain (HT) tire. The next-generation RIDGECRAWLER HT offers a smooth, quiet ride with excellent tread life. Ideal for many SUVs and pickup trucks that spend the majority of their time on paved roads and light trails.

FEATURES & BENEFITS

RIDE COMFORT

Incredibly smooth ride to last the life of the tire. Tighter center tread block promotes regular wear

LONGEVITY

Purpose-built casing structure to handle heavier vehicles and their loads.

PERFORMANCE

Consistent all-season traction and handling, thanks to a deep tread and four well-spaced circumferential grooves that keep wet weather away from the tread blocks, promoting continuous grip.



RIDGECRAWLER HT02

HWY TERRAIN ALL SEASON



Part #	Size Dimension	LI/SR	L.R.	T.D. 32nds	UTQG
1602510K	235/75R15	105T		11	700 A B
1602508K	235/70R16	106T		11	700 A B
1602515K	245/70R16	107T		11	700 A B
1602514K	245/75R16	111T		11	700 A B
1602511K	255/70R16	111T		11	700 A B
1602509K	265/70R16	112T		11	700 A B
1602507K	265/75R16	116T		11	700 A B
1602512K	235/75R17	109T		11	700 A B
1602505K	245/65R17	107T		11	700 A B
1602513K	245/70R17	110T		11	700 A B
1602534K	265/65R17	112S		11	700 A B
1602532K	265/70R17	115T		11	700 A B
1602536K	255/70R18	113T		11	700 A B
1602525K	265/60R18	110H		11	700 A A
1602523K	265/65R18	114T		11	700 A B
1602517K	265/70R18	116T		11	700 A B
1602522K	275/65R18	116T		11	700 A B
1602518K	265/50R20	107V		11	700 A A
1602490K	275/55R20	117T	XL	11	700 A A
1602524K	275/60R20	115T		11	700 A A
1602526K	275/50R22	111H		11	700 A A
1602506K	285/45R22	114H	XL	11	700 A A
1602535K	LT215/85R16	115/112R	10	14	
1602491K	LT225/75R16	115/112R	10	14	
1602528K	LT235/85R16	120/116R	10	14	
1602516K	LT245/75R16	120/116R	10	14	
1602529K	LT265/75R16	123/120R	10	14	
1602530K	LT235/80R17	120/117R	10	14	
1602527K	LT245/70R17	119/116S	10	14	
1602531K	LT245/75R17	121/118S	10	14	
1602504K	LT265/70R17	123/120S	10	14	
1602519K	LT265/70R18	124/121S	10	14	
1602520K	LT275/65R18	123/120S	10	14	
1602533K	LT275/70R18	125/122S	10	14	
1602521K	LT275/65R20	126/123S	10	14	

BLACKHAWK

HT01

PERFORMANCE CUV/SUV ALL-SEASON

The HT01 is engineered to deliver a combination of comfort and performance on pickups, SUVs and cross-over vehicles. A staggered tread block design provides a quiet, superior ride while full-depth sipes deliver exceptional all-weather traction throughout its long life. The HT01 features a specially formulated compound for enhanced tread life.

FEATURES & BENEFITS

PROVEN TREAD DESIGN

Block design provides noise cancellation, balances pressure and allows for more contact points on the road surface. Tie bars on shoulders for high speed stability.

RELIABLE TRACTION

Block edge design provides better wet traction and handling.

CONSISTENT HANDLING

Enhanced upper shoulder profile allows better surface contact for control.



Part #	Size Dimension	LI/SR	L.R.	T.D. 32nds	UTQG
5545907V	225/70R15	100S	STD	11	700 A B
5545760V	235/75R15	105S	STD	12	700 A B
4120167V	215/65R16	98T	STD	12	700 A B
4120165V	215/70R16	100T	STD	11	700 A B
5545908V	225/70R16	103S	STD	12	700 A B
5545913V	225/75R16	104S	STD	11	700 A B
5545759V	235/70R16	106T	STD	11	700 A B
4120193V	245/70R16	107S	STD	12	700 A B
5545762V	245/75R16	111T	STD	11	700 A B
4120159V	255/70R16	111T	STD	11	700 A B
4120158V	265/70R16	112T	STD	11	700 A B
5545766V	265/75R16	116T	STD	11	700 A B
4120161V	225/60R17	99H	STD	11	700 A B
4120170V	225/65R17	102S	STD	11	700 A B
4120160V	235/65R17	104T	STD	12	700 A B
4120160V	235/65R17	104S	STD	12	700 A B
5545931V	235/75R17	109S	STD	11	700 A B
4120192V	245/65R17	107T	STD	11	700 A B
5545928V	245/70R17	110T	STD	11	700 A B
4120163V	265/65R17	112T	STD	11	700 A B
5545765V	265/70R17	115T	STD	11	700 A B
4120150V	235/55R18	100T	STD	10	700 A B
4120190V	235/60R18	107V	XL	11	700 A B
4120147V	235/65R18	106T	STD	11	700 A B
4120176V	245/60R18	105H	STD	11	700 A B
4120151V	255/65R18	111S	STD	11	700 A B
5545934V	255/70R18	113T	STD	11	700 A B
4120175V	265/60R18	110T	STD	11	700 A B
5545769V	275/65R18	116T	STD	11	700 A B
4120178V	225/55R19	99V	STD	11	700 A B
4120191V	235/55R19	101V	STD	11	700 A B
4120187V	245/55R19	103H	STD	11	700 A B
4120146V	255/50R20	105H	STD	11	700 A B
4120179V	265/50R20	107V	STD	11	700 A B
5545937V	275/45R20	110H	XL	10	700 A B
5545767V	275/55R20	113H	STD	10	700 A B
5545768V	275/60R20	115S	STD	11	700 A B
5545894V	LT215/85R16	115/112S	10PR	11	
5545771V	LT225/75R16	115/112S	10PR	13	
5545773V	LT235/85R16	120/116S	10PR	13	
5545775V	LT245/75R16	120/116S	10PR	13	
5545779V	LT265/75R16	123/120S	10PR	13	
5545772V	LT235/80R17	120/117R	10PR	13	
5545774V	LT245/70R17	119/116R	10PR	13	
5545776V	LT245/75R17	121/118S	10PR	11	
5545777V	LT265/70R17	121/118Q	10PR	13	
9630781V	235/65R16C *	121/119R	10PR	13	

* MILEAGE WARRANTY DOES NOT APPLY TO C-TYPE 235/65R16

HT01

PERFORMANCE CUV/SUV ALL-SEASON

C-TYPE 235/65R16C

The Commercial C-type tire, engineered for the demanding conditions for LMD (Last Mile Delivery) vehicles.



BLACKHAWK

RIDGECRAWLER A/T

PREMIUM ALL-TERRAIN

The Blackhawk RIDGECRAWLER A/T is a premium all-terrain tire engineered for pickup trucks and SUVs. Featuring enhanced 3PMS certified traction, with a deep tread depth, it delivers superior performance in various on and off-road driving conditions. Recognized for its consistent reliability, the Blackhawk RIDGECRAWLER A/T is your vehicle's trusted all-terrain tire, providing a quiet and comfortable driving experience.

FEATURES & BENEFITS

DRIVING COMFORT

Optimized pitch sequence through Finite Element Analysis simulation software reduces resonance effects, contributing to a serene vehicle cabin.

ADVANCED TRACTION

Backed by 3PMS Certification, deep all-terrain tread lugs, and staggered shoulder tread blocks, the Blackhawk RIDGECRAWLER A/T ensures reliable traction on diverse terrains and throughout the seasons.

TREAD LONGEVITY

Benefiting from a broad tread footprint and reinforced shoulder support, the tire promotes uniform pressure distribution, preventing irregular wear and extending overall tread life.



Part #	Size Dimension	LI/SR	L.R.	T.D. 32nds	UTQG
4120849K	235/75R15	109S	XL	13	620 A B
4120851K	235/70R16	106S		13	620 A B
4120852K	245/75R16	111S		13	620 A B
4120853K	265/70R16	112T		13	620 A B
4120854K	265/75R16	116S		13	620 A B
1602161K	225/60R17	99T		13	620 A B
1602162K	225/65R17	106T	XL	13	620 A B
4120859K	235/65R17	104S		13	620 A B
4120860K	245/65R17	107S		13	620 A B
4120861K	245/70R17	110T		13	620 A B
4120862K	255/65R17	110T		13	620 A B
4120863K	265/65R17	112S		13	620 A B
4120864K	265/70R17	115S		13	620 A B
1602163K	235/60R18	107T	XL	13	620 A B
4120872K	265/65R18	114T		13	620 A B
4120873K	265/70R18	116T		13	620 A B
4120874K	275/65R18	116T		13	620 A B
4120880K	265/50R20	111T	XL	13	620 A B
4120848K	275/55R20	117T	XL	13	620 A B
4120881K	275/60R20	115T		13	620 A B
1602164K	275/50R22	115T	XL	13	620 A B
4120890K	285/45R22	114H	XL	13	620 A B
4120855K	LT225/75R16	115/112S	10PR	16	
4120856K	LT235/85R16	120/116S	10PR	16	
4120857K	LT245/75R16	120/116S	10PR	16	
4120858K	LT265/75R16	123/120S	10PR	16	
4120865K	LT235/80R17	120/117R	10PR	16	
4120866K	LT245/70R17	119/116S	10PR	16	
4120867K	LT245/75R17	121/118S	10PR	16	
4120868K	LT265/70R17	123/120S	10PR	16	
4120869K	LT285/70R17	126/123S	10PR	16	
4120870K	LT315/70R17	126/123S	10PR	16	
4120875K	LT265/70R18	124/121S	10PR	16	
4120876K	LT275/65R18	123/120R	10PR	16	
4120877K	LT275/70R18	125/122R	10PR	16	
4120882K	LT265/60R20	121/118R	10PR	16	
4120883K	LT275/55R20	120/117R	10PR	16	
4120884K	LT275/60R20	123/120R	10PR	16	
4120885K	LT275/65R20	126/123R	10PR	16	
4120886K	LT285/60R20	125/122R	10PR	16	
4120887K	LT305/55R20	121/118R	10PR	16	
4120850K	31x10.50R15LT	109S	6PR	16	
4120871K	35x12.50R17LT	125R	10PR	16	
4120878K	33x12.50R18LT	118S	10PR	16	
4120879K	35x12.50R18LT	123R	10PR	16	
4120888K	33x12.50R20LT	114S	10PR	16	
4120889K	35x12.50R20LT	121R	10PR	16	

RIDGECRAWLER

A/T

PREMIUM ALL-TERRAIN



BLACKHAWK

RIDGECRAWLER R/T

RUGGED TERRAIN

Explore the RIDGECRAWLER RT (rugged terrain) tire: Your gateway to limitless adventure. Purposely engineered for enduring durability, it promises unmatched performance across a variety of landscapes. The optimized tread design provides stability, and 3PMS certification ensures dependable performance in any weather. Its robust appearance commands attention. Elevate your journey with the RIDGECRAWLER RT tire – your key to adventure without limits.

FEATURES & BENEFITS

ALL-WEATHER TRACTION

Experience consistent grip and performance in various weather conditions throughout the year, from hot summers to frigid winters with the 3PMS certified badge and 3D sipes on all RT tires.

ENHANCED TREAD PATTERN

Optimized wide footprint tread design provides excellent traction, enhancing control on any surface. Enjoy a smooth and comfortable ride on paved roads while seamlessly transitioning to an off-road terrain.

AGGRESSIVE SIDEWALL BITERS

Durable sidewall lugs provide extra traction and protection when needed the most, either preventing cuts and snags or for those that air down on the trails.



Part #	Size Dimension	LI/SR	L.R.	T.D. 32nds	UTQG	Stud Size
1600449K	265/70R16	116Q	XL	15	600 A B	
1600450K	265/65R17	116Q	XL	15	600 A B	
1600452K	265/70R17	115T		16	600 A B	
1600469K	255/70R18	116T	XL	16	600 A B	
1600457K	265/60R18	114S	XL	16	600 A B	
1600458K	265/65R18	116T	XL	16	600 A B	
1600470K	265/70R18	116S		16	600 A B	
1600471K	275/65R18	116T	XL	16	600 A B	
1600460K	265/50R20	111T	XL	16	600 A B	
1600448K	275/55R20	117T	XL	16	600 A B	
1600478K	275/60R20	116T	XL	16	600 A B	
1600451K	285/45R22	114Q	XL	16	600 A B	
1600486K	LT245/75R16	120/116Q		18		15
1600487K	LT265/75R16	123/120Q		18		15
1600453K	LT245/70R17	119/116Q	10PR	18		15
1600454K	LT245/75R17	121/118Q	10PR	18		15
1600455K	LT265/70R17	123/120Q	10PR	18		15
1600456K	LT285/70R17	126/123Q	10PR	18		15
1600472K	LT265/65R18	122/119Q	10PR	18		15
1600473K	LT265/70R18	124/121Q	10PR	18		15
1600474K	LT275/65R18	123/120Q	10PR	18		15
1600475K	LT275/70R18	125/122Q	10PR	18		15
1600479K	LT275/55R20	120/117Q	10PR	18		15
1600480K	LT275/60R20	123/120Q	10PR	18		15
1600481K	LT275/65R20	126/123Q	10PR	18		15
1600461K	LT305/55R20	125/122Q	12PR	18		15
1600466K	33X12.50R17LT	120Q	10PR	18		15
1600467K	35X12.50R17LT	125Q	10PR	18		15
1600468K	37X12.50R17LT	124Q	8PR	18		15
1600459K	33X12.50R18LT	122Q	12PR	18		15
1600476K	35X12.50R18LT	128Q	12PR	18		15
1600477K	37X12.50R18LT	128Q	10PR	18		15
1600462K	33X12.50R20LT	119Q	12PR	18		15
1600463K	35X12.50R20LT	125Q	12PR	18		15
1600482K	35X13.50R20LT	126Q	12PR	18		15
1600483K	37X12.50R20LT	126Q	10PR	18		15
1600464K	33X12.50R22LT	114Q	12PR	18		15
1600465K	35X12.50R22LT	121Q	12PR	18		15
1600484K	37X12.50R22LT	127Q	12PR	18		15
1600485K	37X13.50R22LT	128Q	12PR	18		15

RIDGECRAWLER R/T

RUGGED TERRAIN



* LT TIRES ARE PINNED FOR STUDS

BLACKHAWK

ICE PREY BW10

STUDDABLE WINTER TIRE

Tame winter roads with the Blackhawk ICE PREY BW10 winter tire. Engineered for outstanding performance in cold temperatures, the ICE PREY BW10 delivers exceptional traction on snow and ice. Its directional tread pattern and studdable design ensure superior grip, while the advanced winter compound enhances control in even the harshest conditions. Stay confident and in command all winter long with the ICE PREY BW10.

FEATURES & BENEFITS

DIRECTIONAL V-SHAPED STAGGERED TREAD BLOCK

Delivers superior grip on winter roads, by evacuating snow and slush through the V-shaped channels away from the tread and road contact patch.

MULTI-DIRECTIONAL 3D SIPING

3D siping create more biting edges improving grip and handling on snow, ice, and slush.

PROPRIETARY WINTER RUBBER COMPOUNDS

As temperatures drop, the BW10's tread stays flexible, ensuring enhanced handling and shorter braking distances for a safer winter drive.



STUDDABLE WINTER TIRE



Part #	Size Dimension	LI/SR	L.R.	T.D. 32nds	Stud Size
1602991S	175/65R14	82T		13	12
1602992S	175/70R14	84T		13	12
1602988S	185/65R14	86T		13	12
1602966S	175/65R15	84T		13	12
1602993S	185/55R15	82T		13	12
1602987S	185/60R15	84T		13	12
1602959S	185/65R15	92T	XL	13	12
1602960S	195/60R15	88T		13	12
1602978S	195/65R15	95T	XL	13	12
1602955S	205/65R15	94T		13	12
1603010S	235/75R15	105S		13	12
1602989S	205/55R16	94H	XL	13	12
1602965S	205/60R16	96T	XL	13	12
1602962S	205/65R16	95T		13	12
1602963S	215/55R16	97H	XL	13	12
1602967S	215/60R16	95T		13	12
1602958S	215/65R16	98T		13	12
1602979S	215/70R16	100S		13	12
1602981S	225/60R16	98T		13	12
1602974S	225/65R16	100T		13	12
1602961S	205/50R17	93H	XL	13	12
1603011S	205/55R17	95H	XL	13	12
1602986S	215/45R17	91H	XL	13	12
1602990S	215/50R17	95H	XL	13	12
1603005S	215/55R17	98H	XL	13	12
1602957S	215/60R17	96T		13	12
1602977S	215/65R17	99T		13	12
1602956S	225/45R17	94H	XL	13	12
1602976S	225/50R17	98H	XL	13	12
1602984S	225/55R17	101H	XL	13	12
1602982S	225/60R17	99T		13	12
1602983S	225/65R17	106T	XL	13	12
1602973S	235/45R17	97T	XL	13	12
1603006S	235/55R17	99H		13	12
1602995S	235/60R17	102T		13	12
1603000S	235/65R17	104S		13	12
1602969S	215/45R18	93H	XL	13	12
1602964S	215/55R18	95T		13	12
1602985S	225/40R18	92H	XL	13	12
1602971S	225/45R18	95T	XL	13	12
1602980S	225/50R18	95H		13	12
1602968S	225/55R18	98T		13	12
1602970S	225/60R18	100T		13	12
1602975S	235/45R18	98H	XL	13	12
1602994S	235/50R18	101T	XL	13	12
1602996S	235/55R18	104H	XL	13	12
1603001S	235/60R18	103H		13	12
1603014S	245/45R18	100H	XL	13	12
1602997S	255/55R18	105H		13	12
1602972S	225/55R19	99H		13	12
1602954S	235/35R19	91H	XL	13	12
1603012S	235/40R19	96H	XL	13	12
1602999S	235/55R19	105H	XL	13	12
1603009S	245/55R19	107H	XL	13	12
1603003S	235/55R20	105H	XL	13	12
1603002S	255/45R20	105V	XL	13	12
1603004S	255/50R20	105V		13	12
1602998S	255/55R20	107H		13	12
1603013S	255/40R21	102V	XL	13	12
1603007S	265/45R21	108H	XL	13	12
1603008S	275/45R21	110H	XL	13	12

ICE PREY BW10

STUDDABLE WINTER TIRE



BLACKHAWK

BLACKHAWKTIREUSA.COM

BLACKHAWK



RIDGECRAWLER LMD

Last-mile delivery (LMD) vehicles are a familiar sight on our streets and neighborhoods, ensuring packages reach their final destination. Built for durability and strength, the RIDGECRAWLER LMD tire is engineered to withstand constant turning and braking. Reliable and rugged, the RIDGECRAWLER LMD is the ultimate workhorse for your delivery needs.

FEATURES & BENEFITS

PREMIUM TRACTION

Deep tread depth of 13/32", with siped tread blocks

STRENGTH

Enhanced casing structure that withstands the demands of daily loads.

TRUSTED RIDE

Wide footprint provides confidence and ride stability.

LAST MILE DELIVERY

Part #	Size	LI/SR	PLY	T.D. 32nds	O.D.	S.W.	R.W.	LCC 1X	LCC 2X
TBD	195/75R16C	107/105R	8	13	27.5	7.7	5.5	2150@69	2040@69
TBD	225/75R16C	121/120R	10	13	29.3	8.8	6.0	3197@83	3086@83
TBD	235/65R16C	121/119R	10	13	28	9.6	7.0	3197@83	2998@83

NOTE : 225/75R16C LCC = 3197 LBS. VS. LT225/75R16 10PR = 2680 LBS.

BLACKHAWK

HST01

The Blackhawk HST01 is a premium tire designed for towed trailer applications. With its radial construction, the HST01 is engineered to deliver long life and superior towing stability.

FEATURES & BENEFITS

SUPERIOR ENDURANCE AND TOUGHNESS

Radial construction provides strength and durability. Tread is designed to reduce excessive heat build up

BALANCED STABILITY

Tread pattern delivers a stable and quiet ride

ENHANCED EFFICIENCY

Rubber compound engineered to provide low rolling resistance

PREMIUM SPECIALTY TRAILER TIRE

Size Dimension	LI/SR	PLY	T.D. 32nds	O.D.	S.W.	R.W.	LCC 1X	LCC 2X
ST175/80R13	91/87L	6	10	24.0	7.0	5.0	1360@50	1200@50
ST205/75R14	100/96L	6	10	26.1	8.0	5.5	1760@50	1570@50
ST215/75R14	102/98L	6	10	26.7	8.5	6.0	1870@50	1650@50
ST205/75R15	107/102L	8	10	27.1	8.0	5.5	2150@65	1870@65
ST225/75R15	117/112L	10	10	28.3	8.8	6.0	2830@80	2470@80
ST235/80R16	124/120L	10	10	30.7	9.2	6.5	3520@80	3080@80
ST235/85R16	128/124L	12	10	31.7	9.25	6.5	3960@95	3520@95

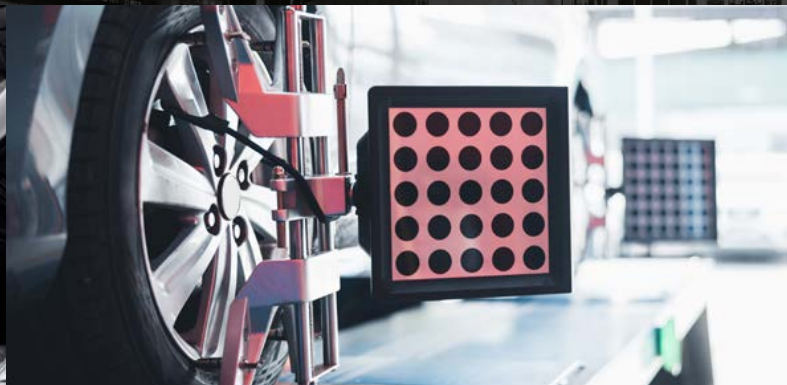
NYLON OVERLAY ON 15" AND 16" SIZES.

BLACKHAWK

ROAD HAZARD REPLACEMENT PROGRAM

BLACKHAWK Tire offers a “limited, free replacement” road hazard program which applies to all BLACKHAWK passenger and light truck patterns. (ST tires are not part of this replacement program). This program is a gesture of goodwill and not a warranty that your tire will not fail due to a road hazard. This free replacement road hazard program applies only during the first 3/32 of the original usable tread or two years from the date of purchase, whichever comes first. BLACKHAWK will replace the un-repairable tire with a similar new BLACKHAWK Tire. Mounting, balancing and applicable taxes are the responsibility of the consumer. Once a tire is worn beyond the first 3/32, or more than two years from date of purchase, this road hazard program is null and void. Repairable tires must always be repaired at the vehicle owner’s expense.

This replacement program applies to all tires purchased after January 1, 2025.
(Tires purchased prior to 1/1/2025 do not qualify for this program.)



BLACKHAWK USA LIMITED WARRANTY

■ ALL BLACKHAWK TIRE WARRANTIES MUST BE SUBMITTED THROUGH THE POINT OF PURCHASE

PASSENGER & LIGHT TRUCK TIRES

This Limited Warranty / Adjustment Policy provides for tire replacement under specified conditions. This policy applies to Blackhawk tires used in normal highway service (commercial applications excluded) displaying warrantable conditions. Tires that become unserviceable or wear out because of neglect or mistreatment are excluded from Blackhawk warranty coverage.

THIS IS THE ONLY EXPRESSED WARRANTY MADE BY SAILUN TIRE AMERICAS NO EMPLOYEE, RETAILER, DEALER, OR REPRESENTATIVE HAS THE AUTHORITY TO MAKE ANY WARRANTY, REPRESENTATION, PROMISE OR AGREEMENT THAT IN ANY WAY VARIES THE TERMS OR CONDITIONS SET FORTH IN THIS LIMITED WARRANTY.

WARRANTY ELIGIBILITY

This warranty applies to every Blackhawk replacement passenger car or light truck tire bearing the Blackhawk brand name and complete Department of Transportation serial identification number while operated in normal highway use (commercial applications excluded) in the USA. These tires are covered by this warranty for the life of the original usable tread depth (the original tread depth down to the level of tread wear indicators molded at 2/32 inch) within 60 months from the date of purchase (proof of purchases required), or if proof of purchase is not available, the coverage will be 60 months from the date of manufacture. This warranty applies only to the original tire purchaser, and is not transferrable to any other party. This time period does not represent the expected service life for tires covered by this warranty.

WHAT IS NOT WARRANTED

Tires that have become unserviceable for the following reasons:

- Improper repairs or repairs that have failed. Improper repairs will void this Limited Warranty.
- Improper maintenance which can include: improper inflation or other maintenance abuses
- Improper application or operations such as speeding, improper tire size and / or specification.
- Improper mounting / dismounting procedures, tire/wheel assembly imbalance.
- Mechanical irregularities in the vehicle or wheel, such as bent wheel assemblies, misalignment, worn or faulty components.
- Weather checking/cracking or failures after four years (60 months) from the date of manufacture.
- Accident, corrosion, vandalism, fire or damages caused by contamination by petroleum or other chemical products.
- Tires used in commercial applications such as taxis, shuttle vehicles and couriers.
- Irregular tread wear, or worn-out (beyond 2/32nds remaining tread depth) is not covered under the Blackhawk Limited Warranty
- Road hazard injuries or damages caused by obstacles or debris, such as cuts, punctures (whether repairable or not), snags, bruises, tears, abrasions or impact breaks (whether repairable or not), etc.

ADDITIONAL EXCLUSIONS

- Materials added such as fillers, sealants, balancing substances and external tire treatments. If the added material is the cause of a failure the warranty will be deemed as void.
- Tires submitted for ride disturbance complaints after 25% (2/32") tread wear.
- Tires on vehicles registered or operated outside of the USA.
- Tires not purchased in the USA through the Sailun Tire Americas distribution channel.
- Tires purchased as used.
- Tires branded by Blackhawk to note special classification at time of purchase, such as "NA" (non-adjustable), or tires altered by notching or buffing.
- Tires used on vehicles in racing or special applications.
- Tires rendered unserviceable due to snow chains or studs.
- Flat spotting due to improper storage or caused by brake lock.
- Blackhawk products produced prior to January 1, 2013.

* Note: Consequential damage mentioned above may not apply to you based on individual State limitations.

MANDATORY TIRE REGISTRATION

For tires purchased in the USA, please register your tires at: blackhawktireusa.com

WHAT IS WARRANTED

Tires that have become unserviceable for reasons other than stated above, within 60 months of the date of manufacturer or 60 months from the date of purchase (proof of purchase required) during its useable tread life, the tires will be replaced in accordance with this warranty.

LIMITED MILEAGE WARRANTY

MODEL	DEFECTS/MATERIALS	# MONTHS	TREAD LIFE PROTECTION	MILES/MONTHS
HH11	Yes	60	Yes	60K/60
AGILITY UHP AS	Yes	60	Yes	50K/60
HU02	Yes	60	Yes	40K/60
AGILITY SUV	Yes	60	Yes	60K/60
RIDGECRAWLER HT02	Yes	60	Yes	60K/60
HT01	Yes	60	Yes	60K/60
RIDGECRAWLER A/T	Yes	60	Yes	50K/60
RIDGECRAWLER R/T	Yes	60	Yes	45K/60
RIDGECRAWLER LMD	Yes	60	NO	NO
ICE PREY BW10	Yes	60	NO	NO
HST01 ST TRAILER	Yes	60	NO	NO

* Note: All tire models, staggered vehicle fitments have half mileage for rear tires if different size than the front tires

Select Blackhawk tires are assigned a Limited Mileage Warranty that protects the consumer against premature tread wear. If a tire reaches the end of its "usable tread life" before the stated mileage protection, the consumer will be issued a replacement Blackhawk tire on a prorated basis, which means the consumer will be responsible for a percentage of the replacement cost. In order to maintain limited mileage protection, all tires must be properly inflated, balanced, rotated and aligned as recommended by vehicle manufacturer. All claims must be accompanied by the original purchase invoice as well as invoices for all on time services provided. Under all circumstances, the cost of mounting, balancing and any other service charges including applicable taxes, disposal fees are required to be paid by the consumer.

APPROVED TIRE ROTATION INTERVALS AND PATTERNS

The purpose of regularly rotating tires is to prolong their useful life by achieving more uniform wear for all tires on a vehicle. Before rotating tires, always consult the owner's manual for rotation recommendations for specific vehicles. If no rotation period is specified, tires should be rotated, at minimum, every 6,000 miles or at any sign of uneven wear. The first rotation is the most important. Rotating the tires as recommended by the vehicle or tire manufacturer will help even out the amount of wear on each tire and extend the life of the entire set. Such tires include: "Temporary Use Spares", unidirectional tires and tires with asymmetric tread designs. Also, some vehicles may have different sized tires mounted on the front and rear axles, and these different sized tires have rotation restrictions. Check the owner's manual for the proper rotation recommendations for these special cases. When tires are rotated, the inflation pressures must be adjusted for the tires' new positions in accordance with the actual loads on that wheel position and the vehicle manufacturer's recommendations. Underinflated or overinflated tires may result in poor handling, uneven tread wear, and increased fuel consumption. If the tires show uneven wear, ask the service person to check for and correct any misalignment, imbalance, or other mechanical problem before rotation.

ADJUSTMENT POLICY

Passenger and Light Truck Tires When the original usable tread is worn 25% (2/32") or less, and a warrantable condition is found, the tire will be replaced with a comparable new Blackhawk tire free of charge. Replacement tires will be mounted and balanced at the vehicle owner's expense. Other service charges such as tire rotation, alignment or applicable taxes are payable by the customer. When a tire has worn past the above specified period for free replacement and a warrantable condition is found, the customer must pay for the cost of a new comparable Blackhawk passenger or light truck tire on a prorated basis. The dealer shall determine this cost by multiplying the percentage of usable tread worn by the current retail selling price (Suggested Retail Price x 80%) of that tire at the time of warranty replacement. The cost of mounting, balancing and any other service charges or applicable taxes are payable by the customer.

BLACKHAWK GARANTÍA LIMITADA USA

■ TODAS LAS GARANTÍAS DE LOS NEUMÁTICOS BLACKHAWK DEBEN ENVIARSE A TRAVÉS DEL PUNTO DE COMPRA

NEUMÁTICOS DE CAMIONETAS DE PASAJEROS Y LIGERAS

Esta garantía limitada/política de ajuste proporciona el reemplazo de neumáticos bajo condiciones especificadas. Esta política aplica a neumáticos Blackhawk usados en servicio normal en carretera (se excluyen aplicaciones comerciales) que muestren condiciones garantizadas. Los neumáticos que queden inservibles o desgastados debido a descuido o maltrato están excluidos de la cobertura de la garantía Blackhawk. ESTA ES LA ÚNICA GARANTÍA EXPRESA HECHA POR SAILUN TIRE AMERICAS; NINGÚN EMPLEADO, VENDEDOR, DISTRIBUIDOR O REPRESENTANTE TIENE LA AUTORIDAD DE HACER ALGUNA GARANTÍA, DECLARACIÓN, PROMESA O ACUERDO QUE DE ALGUNA FORMA SEA DIFERENTE A LOS TÉRMINOS O LAS CONDICIONES ESTABLECIDOS EN ESTA GARANTÍA LIMITADA.

ELEGIBILIDAD PARA GARANTÍA

Esta garantía aplica a cada neumático de reemplazo para automóvil de pasajeros o camioneta ligera Blackhawk con el nombre de la marca Blackhawk y el número de serie de identificación completo del Departamento de transporte mientras sea operado en uso normal de carretera (se excluyen aplicaciones comerciales) en los Estados Unidos. Estos neumáticos están cubiertos por esta garantía durante la vida útil de la banda de rodamiento original (la profundidad de la banda de rodamiento original hasta el nivel de los indicadores de desgaste de la banda de rodamiento moldeados a 2/32 de pulgada) dentro de 60 meses a partir de la fecha de compra (prueba de compra requerida), o si la fecha de compra no está disponible, la cobertura será de 60 meses a partir de la fecha de fabricación. La garantía aplica solo al comprador original del neumático y no es transferible a ningún tercero. Este periodo de tiempo no representa la vida útil de los neumáticos cubiertos por esta garantía.

LO QUE NO ESTÁ GARANTIZADO

Neumáticos que han quedado inútiles por los siguientes motivos:

- Reparaciones incorrectas o reparaciones que han fallado. Las reparaciones incorrectas anularán esta garantía limitada.
- Mantenimiento incorrecto, que puede incluir: inflado incorrecto u otros abusos de mantenimiento
- Uso incorrecto u operaciones como exceso de velocidad, tamaño de neumático y/o especificación incorrectos.
- Procedimientos de montaje/desmontaje incorrectos, desbalance del ensamble de neumático/rueda.
- Irregularidades mecánicas en el vehículo o en la rueda, como ensambles de rueda curvos, desalineación, componentes desgastados o defectuosos.
- Arqueo/agrietamiento por clima o fallas después de cuatro años (60 meses) desde la fecha de fabricación.
- Accidente, corrosión, vandalismo, incendio o daños ocasionados por contaminación por petróleo u otros productos químicos.
- Neumáticos usados en aplicaciones comerciales como taxis, vehículos de transporte y repartidores.
- El desgaste irregular de la banda de rodamiento, o desgaste (más allá de 2/32 restantes de profundidad de neumático) no está cubierto por la garantía limitada Blackhawk
- Lesiones por peligros de la carretera o daños causados por obstáculos o desechos, como cortes, punciones (ya sea que puedan repararse o no), desgarres, magulladuras, rasgaduras, abrasiones o rupturas por impacto (ya sea que puedan repararse o no), etc.

EXCLUSIONES ADICIONALES

- Materiales agregados como rellenos, selladores, sustancias balanceadoras y tratamientos de neumático externos. Si el material añadido es la causa de la falla, la garantía se considerará anulada.
- Los neumáticos enviados por quejas de perturbación de conducción después de 25 % (2/32") de desgaste de la banda de rodamiento.
- Neumáticos de vehículos registrados u operados fuera de los Estados Unidos.
- Neumáticos no comprados en los Estados Unidos mediante el canal de distribución de Sailun Tire Americas.
- Neumáticos comprados como usados.
- Neumáticos marcados por Blackhawk para indicar una clasificación especial en el momento de la compra, como "NA" (no ajustable) o neumáticos alterados por muecas o pulido.
- Neumáticos usados en vehículos en aplicaciones de carreras o especiales.
- Neumáticos que queden inservibles debido a cadenas para nieve o tornillos.
- Puntos planos debido a almacenamiento incorrecto u ocasionados por bloqueo de freno.
- Productos Blackhawk fabricados antes del 1 de enero de 2013.

* Nota: Los daños indirectos mencionados previamente pueden no aplicar a usted con base en las limitaciones estatales individuales.

REGISTRO DE NEUMÁTICOS OBLIGATORIO

Para neumáticos comprados en los Estados Unidos, registre sus neumáticos en blackhawktireusa.com

LO QUE ESTÁ GARANTIZADO

Neumáticos que hayan quedado inservibles por motivos distintos a los mencionados previamente, dentro de 60 meses posteriores a la fecha de fabricación o 60 meses después de la fecha de compra (prueba de compra requerida) durante su vida útil de banda de rodamiento; los neumáticos serán reemplazados de acuerdo con esta garantía.

GARANTÍA DE MILLAJE LIMITADO

MODEL	DEFECTOS/ MATERIALES	NO. DE MESES	PROTECCIÓN DE LA VIDA ÚTIL DE LA BANDA DE RODAMIENTO	MILLAS/ MESES
HH11	SI	60	SI	60K/60
AGILITY UHP AS	SI	60	SI	50K/60
HU02	SI	60	SI	40K/60
AGILITY SUV	SI	60	SI	60K/60
RIDGECRAWLER HT02	SI	60	SI	60K/60
HT01	SI	60	SI	60K/60
RIDGECRAWLER A/T	SI	60	SI	50K/60
RIDGECRAWLER R/T	SI	60	SI	45K/60
RIDGECRAWLER LMD	SI	60	NO	NO
ICE PREY BW10	SI	60	NO	NO
HT01 ST TRAILER	SI	60	NO	NO

* Nota: Para todos los modelos de neumáticos, los vehículos escalonados tienen la mitad del millaje para los neumáticos traseros si son de tamaño distinto a los neumáticos delanteros.

Neumáticos selectos Blackhawk se asignan a una garantía de millaje limitado que protege al consumidor contra desgaste prematuro de la banda de rodamiento. Si un neumático alcanza su "vida útil de la banda de rodamiento" antes de la protección de millaje definida, se emitirá al consumidor un reemplazo de neumático Blackhawk sobre una base prorrateada, lo cual quiere decir que el consumidor será responsable de un porcentaje del costo de reemplazo. Para mantener la protección de millaje limitado, todos los neumáticos deben inflarse, balancearse, rotarse y alinearse correctamente según lo recomienda el fabricante del vehículo. Todas las reclamaciones deben acompañarse por el recibo de compra original, además de recibos de todos los servicios a tiempo proporcionados. Bajo todas las circunstancias, el costo de montar, balancear y cualquier otro costo de servicio, incluyendo impuestos aplicables y cuotas de eliminación, debe pagarlo el cliente.

INTERVALOS Y PATRONES DE ROTACIÓN DE NEUMÁTICOS APROBADOS

El propósito de rotar los neumáticos regularmente es alargar su vida útil al lograr un desgaste más uniforme para todos los neumáticos en un vehículo. Antes de rotar los neumáticos, consulte siempre el manual del propietario para las recomendaciones de rotación para vehículos específicos. Si no se especifica un periodo de rotación, los neumáticos deben rotarse, como mínimo, cada 6,000 millas o ante cualquier señal de desgaste irregular. La primera rotación es la más importante. Rotar los neumáticos como se recomienda por el fabricante del vehículo o de los neumáticos ayudará a balancear el desgaste en cada neumático y a extender la vida de todo el conjunto. Tales neumáticos incluyen: "Repuestos de uso temporal", neumáticos unidireccionales y neumáticos con diseños de banda de rodamiento asimétricas. Además, algunos vehículos pueden tener neumáticos de tamaños distintos montados en los ejes delantero y trasero, y estos tamaños de neumáticos distintos tienen restricciones de rotación. Verifique el manual del propietario para ver las recomendaciones de rotación correctas para estos casos especiales. Al rotar los neumáticos, la presión de inflado debe ajustarse para las nuevas posiciones de los neumáticos de acuerdo con las cargas reales en esa posición de la rueda y con las recomendaciones del fabricante del vehículo. Los neumáticos inflados por debajo o por encima de la especificación producirán manejo inadecuado, desgaste irregular de la banda de rodamiento y mayor consumo de combustible. Si los neumáticos muestran desgaste irregular, pida a la persona de servicio que verifique y corrija cualquier desalineación, desbalanceo u otro problema mecánico antes de la rotación.

POLÍTICA DE AJUSTES

En neumáticos para camionetas de pasajeros y ligeras cuando la banda de rodamiento que puede usarse y esté desgastada 25 % (2/32 ") o menos, y se encuentre una condición cubierta por la garantía, se reemplazará el neumático con un Blackhawk compatible sin costo. Los neumáticos de reemplazo serán montados y balanceados con costo para el propietario. Otros costos de servicio como rotación de los neumáticos, alineación o impuestos aplicables debe pagarlos el cliente. Cuando un neumático está desgastado más allá de un periodo especificado para un reemplazo gratuito y se encuentra una condición cubierta por la garantía, el cliente debe pagar el costo de un neumático Blackhawk comparable para camioneta de pasajeros o ligera de forma prorrateada. El distribuidor debe determinar este costo multiplicando el porcentaje de banda de rodamiento desgastada que puede usarse por el precio de venta de menudeo (Precio de venta sugerido x 80 %) del neumático en el momento del reemplazo por garantía. El costo de montar, balancear o cualquier otro costo de servicio o de impuestos aplicables debe pagarlos el cliente.

The logo features a stylized yellow hawk head icon to the left of the word "BLACKHAWK" in a bold, yellow, sans-serif font.

BLACKHAWK

BLACKHAWKTIREUSA.COM

A nighttime landscape featuring a winding road with light trails from cars, a hawk in flight against a twilight sky, and city lights in the distance.

Head office: 300 - 1 Kenview Blvd, Brampton, ON, L6T 5E6
Tel: (289) 499-3240/Toll Free: 1-855-499-3240

V3.25U